



Powder & Granules Handling Equipment | Powder & Granules Handling Equipment | Powder & Granules Handling Equipment |

# IVA Bulk Handling Equipments Pvt. Ltd.

Plot No. PAP/SH/93/2, MIDC Chakan Phase II, Village - Shinde, Taluka - Khed, Dist. Pune. Pincode - 410501 Maharashtra, India

Cell Phone (+91) 8411959151, 8411959152. Email: [sales@ivaequipments.com](mailto:sales@ivaequipments.com) Website: [www.ivaequipments.com](http://www.ivaequipments.com)

# Screw Conveyor



## ***Tubular Screw Conveyor***

*For Dry Powder Handling*

*We design and manufacture Screws Feeders for handling Cement, Flyash, Filler, Micro Silica, Lime & GGBS*

### Features -

- External tubular body with ball & socket type inlet spout and outlet spout. This type of spout allows a choice of angles from 0° to 45°.
- Continuous flights welded onto the internal rotating pipe.
- Aluminium die casting hanger bearing with special type of hardened rings.
- End bearings with appropriate seals.
- Direct mounted Gearbox with appropriate seals.
- Length as per your requirement



End Bearing



Hanger Bearing for cement



Hanger Bearing for Flyash



Gear Box



Sealing unit

Type	Ø	Length
CSF168	168	On demand
CSF193	193	
CSF219	219	
CSF273	273	

# Bolted Silo

Bolted type Cement Silos which are manufactured in different capacities, provide great advantage especially in transportation.

Silos have the cone, the roof and the cylindrical band built with flanged elements longitudinally. The elements number changes according to the silos series. Silos are bolted on the external part in order to allow a more rapid and easy assembly at site.

Special gaskets and silicone used in the assembly phase ensures maximum endurance.

The parts of the cement silos are manufactured by special Plasma cutting and drilling technology and a special surface cleaning procedure is implemented on them. The various parts of the cement silos are manufactured in sensitive production facilities with special equipment's and are Powder Coated / Liquid PU Paint.



**Bolted Silos Capacity**

	1 shell	2 shell	3 shells	4 shell	5 shell	6 shell	7 shell	8 shell
M <sup>3</sup>	22	37	51	66	80	95	109	124



**Skid Mounted Bolted Silos**

# Dust Collector



These types of filters have a cylindrically shaped body which can be fitted on to the top of Silos as well as ground mounted with electric blower and collecting hopper. We have designed these types of filters for capacity of 24 sqm filtering area. Dust is separated from air flow by POLYPLEAT round type filter elements. These types of filters have become world's favourite solution for Bin and Silo venting.

## Product Range

**RJT - Dust Collector** is fitted on top of the silo where cleaning of filter elements is by compressed reverse air jet.

**RJG - Dust Collector** is fitted on ground with Electric Blower & collecting Hopper, where Hopper is connected to silo by piping. Cleaning of filter element is by compressed reverse air jet.

These filters are designed specifically for Cement, Fly ash and dry powders.

## Features of IVA design Dust collectors

- Weather protection fibre cover with Hinges and self locking when open with air spring.
- Robust Stainless steel Body with Bottom flange and powder coated carbon steel bottom ring for welding on silo.
- Ex-stock delivery.

# Butterfly Valve

## VAF Type Butterfly Valves With Pneumatic & Manual Lever Actuators

Aluminium die casting bodies,  
Aluminium die casting disc and  
NBR type rubber seal.

Double identical flange type  
butterfly valve

Top flange and Bottom flange  
suitable for flexible sleeve type  
arrangement

Can be fitted with pneumatic  
actuators and manual lever type  
actuators

Used in all types of powder  
and granules processing plants  
below the silo, bins, hoppers,  
screw conveyors for material



Code	$\phi A$	$\phi B$	$\phi C$	D	E	Fig.
VAF - 100	100	180	220	200	235	1
VAF - 150	150	200	228	234	269	1
VAF - 200	200	250	278	284	319	2
VAF - 250	250	300	328	334	369	2
VAF - 300	300	350	378	384	419	2

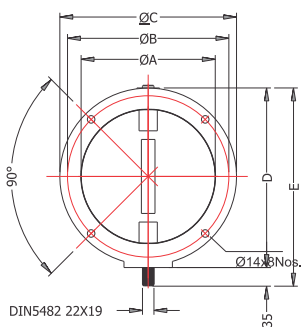


Fig. 1

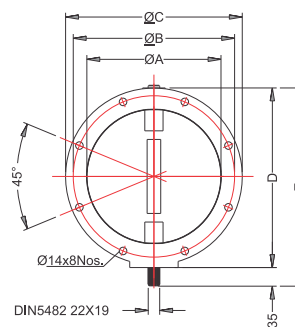
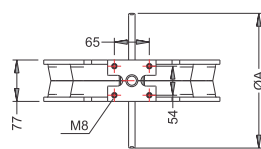


Fig. 2

# Pressure Relief Valve



*IVA designed Pressure relief valve is manufactured in carbon steel and is powder coated. The pressure is controlled with the help of specially designed galvanised springs. The top cover is manufactured in fibre. The valve is flanged type.*

Pressure relief valve is used on top of Silos, bins and hoppers

- To Control positive pressure from 0.1 bar to 0.5 bar
- To control negative pressures from 0.002 bar to 0.012 bar

## **Features of IVA designed valves**

- Lightweight and very easy to handle.
- Easy to fit and quick maintenance.
- Ex- stock delivery



VBAI - Vibrating Bin Aerator Pad mounted from Inside of the silo

## Vibrating Bin Aerator

The Vibrating Bin Aerator Pad solves even the most difficult material flow problems by combining aeration with vibration.

The rubber pad creates an aggressive vibration on the vessel wall as the result of airflow. Vibration is very effective to enhance flow for all types of dry bulk materials.



VBAO - Vibrating Bin Aerator Pad mounted from outside of the silo

# Dust Conditioner



Dust Conditioner is used to mix dust in powder form with water in order to fix the dust.

It is the most economic, advanced technology dust processing equipment that is very easy to install and use.

The dust conditioner is divided in two parts. First part is a screw feeder and the second part is a mixer.

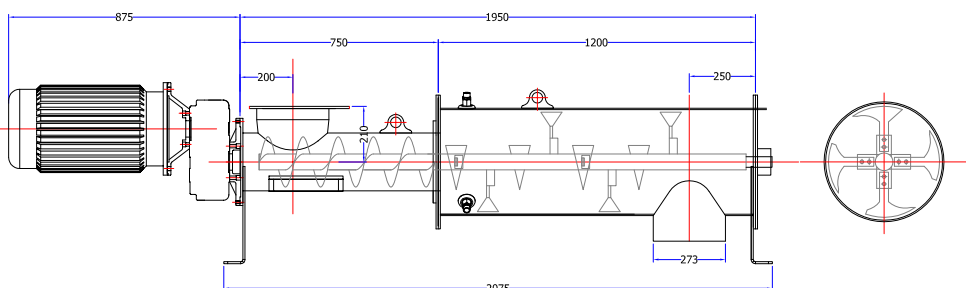
The mixer has heavy duty internal screw with replaceable ploughs made up of hardox material which are specially designed to mix the powder with water.

These ploughs are used for both non-abrasive and highly abrasive type of powder. There are sprinkler nozzles with ball valve to conveniently adjust the water flow.

Water spray nozzle with valves



Ploughs





- *Uncompromising dedication to Research & Development*

- *Highly rationalized and cost-effective CAD/CAM-supported production techniques and logistics*

- *A strong focus on quality and continuous investments in latest manufacturing technology and product development.*



## **IVA Bulk Handling Equipments Pvt. Ltd.**

Plot No. PAP/SH/93/2, MIDC Chakan Phase II,  
Village - Shinde, Taluka - Khed, Dist. Pune.  
Pincode - 410501 Maharashtra, India  
Cell Phone (+91) 8411959151, 8411959152.  
Email: [sales@ivaequipments.com](mailto:sales@ivaequipments.com)  
Website: [www.ivaequipments.com](http://www.ivaequipments.com)